

AlcoCheck Breathalyzer Operational Manual

Model:FC90 (AT578)



TABLE OF CONTENTS

Introduction	01
Preparation for Correct Measurement	01
Power Supply	01
Description of Parts	02
Operation	03
Accessories	05
Important Notes	06
Errors or Troubles	07
Calibration and Record	08
Specifications	09
Warranty	10
Precautions	11

Introduction

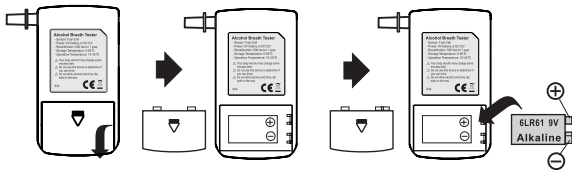
- The device is intended to measure alcohol in the human breath. Measurements obtained by this device are used in the diagnosis of alcohol intoxication.
- The accuracy of this device has been established at a Blood Alcohol Concentration of 0.008 and 0.032 % BAC. Accuracy at a Blood Alcohol Concentration greater than 0.032% BAC has not been established.


Preparation for Correct Measurement

- Before testing, wait at least 15 minutes after your last drinking.
- Only use the device in a temperature 10 ~ 40 °C or 50 ~ 104 °F.

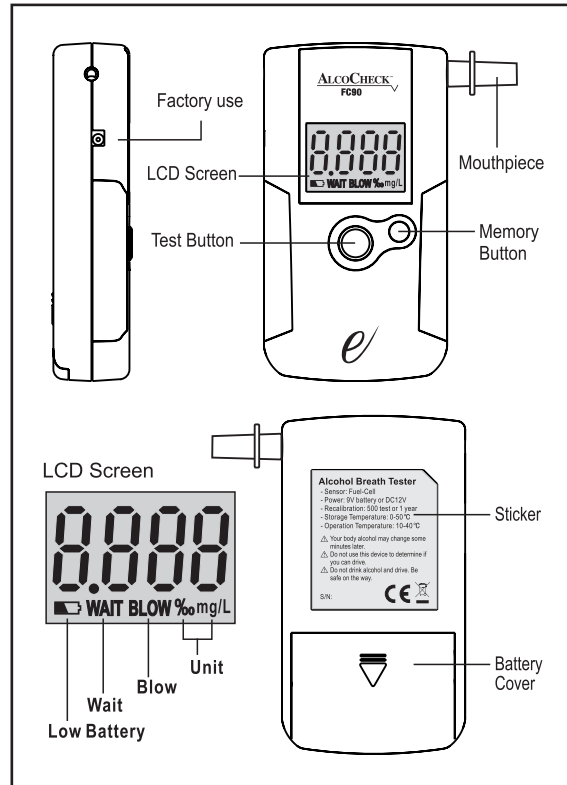
Power Supply

- Slide back the battery cover on the back of the device.
- Insert 1 piece 9V alkaline battery, sure that the “+/-” symbols are correctly.



- If the power is too low, the unit may display a battery symbol “” and the device may not use correctly. You need to change a new battery.

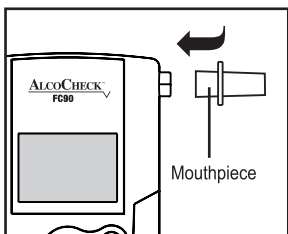
Description Of Parts



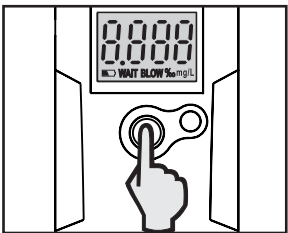
Operation

Test Mode

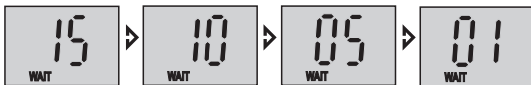
- Insert one of the mouthpieces into the ‘blow in’ hole.



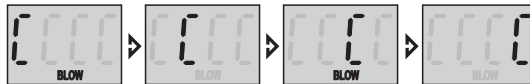
- Press and hold the TEST button until power on. Release it after power on.



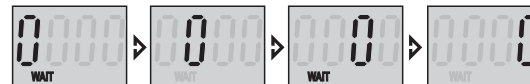
- The WAIT displays on the screen and countdown 15, 14, and 13... to zero.



- The BLOW displays on the screen, and displays “ε” with flashing. Take a deep breath, blowing steadily into the mouthpiece until beeping stops (about 6 seconds).



- The device displays “WAIT” and flashing the “ε” on the screen.



- Your test result will be displayed on the screen for 20 seconds.

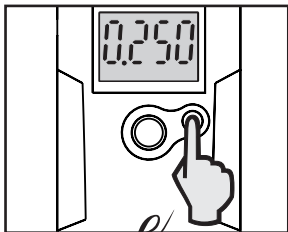


- It will show Err (error) when incorrect blowing. Refer to the chapter of the “Errors and Troubles” in detail. The device will be turned off after indicated error.



Memory mode

- After tested, the device displays for 20 seconds, Your press the memory button to check your last 5 tested records.



- The device will be turn off after displaying 20 seconds.
- The memory button is only available on this mode.

Accessories

- Mouthpieces
- Manual

Important notes

- Before testing, wait at least 15 minutes after your last drinking.
- The blowing time must be enough until beeping stops.
- It may show ERR (error) if none, interrupt or shorter blowing.
- If the device changes temperature suddenly, wait some minutes to use.
- Only use the device in a temperature 10°C -40°C or 50°F -104°F.
- Recalibration interval: 12 months.
- Never store the device in a corrosive gas room.
- Never store the device under sun exposure area.
- Avoid dropping or subjecting the device to a strong shock.

Specifications

- Electron-chemical sensor (Fuel Cell Sensor)
- Blowing time: 6 seconds
- Blowing flow: 10L/min
- Display range: 0.000 ~ 0.200%BAC(2.000‰, 1.000mg/L)
- Show “HI” if above the display range
- Accuracy: +/-0.005% at 0.05%
- Memory: 5 records
- 5 mouthpieces included
- Warm up time: 15 seconds
- Testing Time: 10 seconds
- Repeat test: less than 60 seconds
- Audible sound alarm if above 0.05%BAC
- 4 digits display with status and backlight
- Power supply: 9V battery
- Battery for standard testing is about 500 times
- Low battery indication and auto power off function
- Operation: 10°C ~ 40°C or 50°F ~104°F
- Store: 0°C ~ 50°C or 32°F ~ 122°F
- Size: 115x60x23mm
- Recalibration interval suggest: 12 months
- Blowing pressure and interrupt detection

Warranty

ONE-YEAR LIMITED WARRANTY

We warrant this unit to be free from defects in workmanship or material under normal use for warranty period ONE (1) YEAR from the date of retail purchase.

The warranty period does not include the recalibration service. The warranty covers parts and labor on covered repairs and ground freight back to the local customer.

If a defect arises and we receives a valid claim within the Warranty Period, at its option, we will either:

1. Repair the unit,
2. Exchange the unit, which is new or used functionally equivalent to the original unit,
3. Refund the purchase price of the unit.

For warranty service please follow these instructions:

1. Call or email your distributor to obtain an RMA number.
2. Return the unit postage paid, insured and in a proper box.
3. You should obtain a proof of delivery receipt, and must pay the cost for shipping to us.
4. You must enclose the following with the unit:
 - a. The completed RMA form and description of the problem.
 - b. Your name, return address (Not PO Box)
 - c. Your phone number.
 - d. A copy of your sales receipt or invoice.

Precautions

- Your blood alcohol content (BAC) may change some minutes later.
- You should have your alcohol tester calibrated every 12 months. Failure to do so may cause your readings to be inaccurate.
- Do not use this device to determine if you can drive.
- You cannot use the test results of device in court of law.
- You cannot use the test result of device against police's unit.

Manufactured for:

Express Diagnostics Int'l, Inc.
1550 Industrial Dr, Blue Earth, MN 56013, USA

Authorized representative:

CEpartner4U
Esdoornlaan 13, 3951 DB Maarn, The Netherlands

DC193 0810